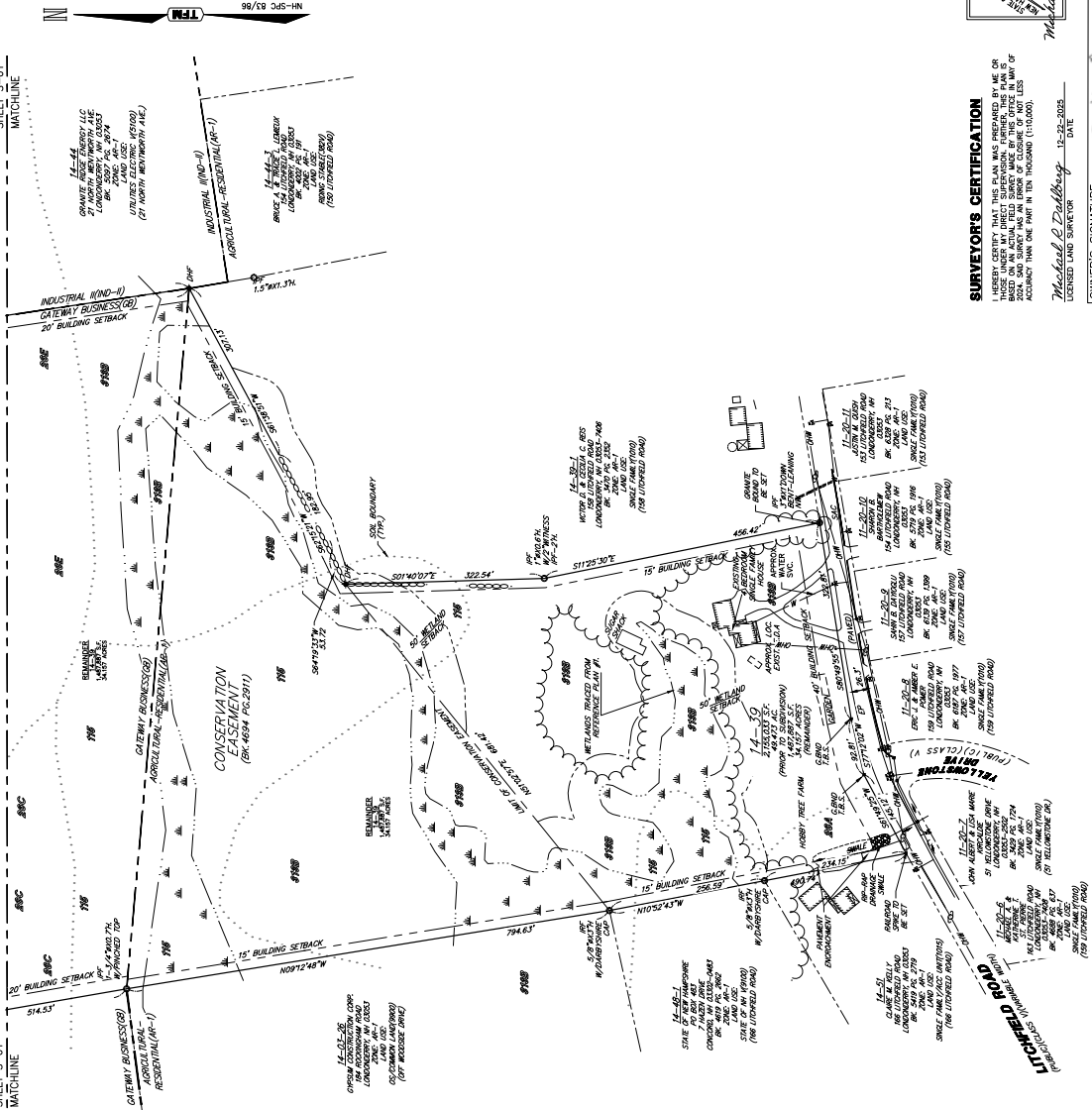


LEGEND

- GRANITE BAND TO BE SET
- IRON PIN (FOUND)
- UTILITY POLE
- WATER VALVE
- CATCH BASIN
- DIRECTION OF DRAINAGE FLOW
- EDGE OF PAVEMENT
- SLOPED ASPHALT CURB
- OVERHEAD WIRES
- 10' CONTOUR
- SOILS MAP UNIT SYMBOL
- WETLAND DELINEATION
- WETLAND SETBACK
- PROPERTY BOUNDARY
- EASEMENT LINE
- WATER LINE
- GAS LINE
- DRAIN LINE
- SEWER LINE
- ARBITING PROPERTY LINE

SHEET S-01
MATCHLINE

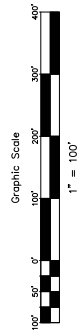
SHEET S-01
MATCHLINE



REFERENCE PLANS

1. STATE OF NEW HAMPSHIRE DEPARTMENT OF TRANSPORTATION, 1974, PLAN OF THE STATE OF NEW HAMPSHIRE, 1974, 1:50,000 SCALE, DATED: 1974, PREPARED BY: PAUL M. DEMPSEY, ASSOCIATES, P.L.L.C., 200 N. MAIN ST., SUITE 200, NASHUA, NH 03001.
2. SUBDIVISION PLAN, 1980, W.P. 1980-001, 1:50,000 SCALE, DATED: 1980, PREPARED BY: PAUL M. DEMPSEY, ASSOCIATES, P.L.L.C., 200 N. MAIN ST., SUITE 200, NASHUA, NH 03001.
3. FINAL SUBDIVISION PLAN, 1980, W.P. 1980-001, 1:50,000 SCALE, DATED: 1980, PREPARED BY: PAUL M. DEMPSEY, ASSOCIATES, P.L.L.C., 200 N. MAIN ST., SUITE 200, NASHUA, NH 03001.
4. FINAL SUBDIVISION PLAN, 1980, W.P. 1980-001, 1:50,000 SCALE, DATED: 1980, PREPARED BY: PAUL M. DEMPSEY, ASSOCIATES, P.L.L.C., 200 N. MAIN ST., SUITE 200, NASHUA, NH 03001.
5. STATE OF NEW HAMPSHIRE DEPARTMENT OF TRANSPORTATION, 1974, PLAN OF THE STATE OF NEW HAMPSHIRE, 1974, 1:50,000 SCALE, DATED: 1974, PREPARED BY: PAUL M. DEMPSEY, ASSOCIATES, P.L.L.C., 200 N. MAIN ST., SUITE 200, NASHUA, NH 03001.

SEE SHEETS SUB-2 OF 8 THROUGH SUB-8 OF 8 FOR 40 SCALE DETAIL OF ENTIRE SITE. SHEETS SUB-1 OF 8 THROUGH SUB-8 OF 8 WILL BE ON FILE AT THE PLANNING & ECONOMIC DEVELOPMENT DEPARTMENT OF THE TOWN OF LONDONDERRY.



TAX MAP 14 LOT 39-2 AND 39

SUBDIVISION PLAN

LAND OF CORNER
162 LITCHFIELD ROAD
LONDONDERRY, NEW HAMPSHIRE

CRANG FOWLER (TRUSTEE)
NICHOLAS F. CORNER TRUST OF 2012
PREPARED FOR:
PURPOSE ENERGY/LONDONDERRY, LLC
PO BOX 4345, WINDHAM, NH 03087

SCALE: 1" = 100'

SEPTEMBER 5, 2025

18252-01	DR	2225/2330	SUB-2 OF 8
<p>City Engineers Structure Engineers Land Surveyors Landscape Architects Scientists</p> <p>TFM</p> <p>148 Constitution Drive Bedford, NH 03110 Phone (603) 472-4488 Fax (603) 472-9747 www.tfm.com</p>			

SURVEYOR'S CERTIFICATION

I HEREBY CERTIFY THAT THIS PLAN WAS PREPARED BY ME OR BASED ON AN ACTUAL FIELD SURVEY MADE BY THIS OFFICE IN MY OF ACCURACY WITH ONE PART IN TEN THOUSAND (1:10,000).

Michael P. Dalbey
LICENSED LAND SURVEYOR 12-22-2025 DATE

OWNER'S SIGNATURE _____ DATE 12/22/2025

OWNER OR REPRESENTATIVE _____

Approved by the Commission: *[Signature]* No. 077



WETLAND SCIENTIST CERTIFICATION

JURISDICTIONAL WETLANDS SHOWN ON THIS PLAN WERE DELINEATED ON THE BASIS OF VISUAL INSPECTION AND THE REGIONAL SUPPLEMENT TO THE WETLAND Delineation MANUAL (RSM) AND THE REGIONAL SUPPLEMENT TO THE WETLAND Delineation MANUAL (RSM) FOR THE NORTHEAST REGION, VERSION 2, JANUARY 2012. DOMINANT WETLAND SOILS WITHIN THE WETLANDS WERE IDENTIFIED AND DelineATED USING THE WETLAND Delineation Manual (WDM), VERSION 3.3. HTTP://WETLAND.DELINEATION.MANUAL.

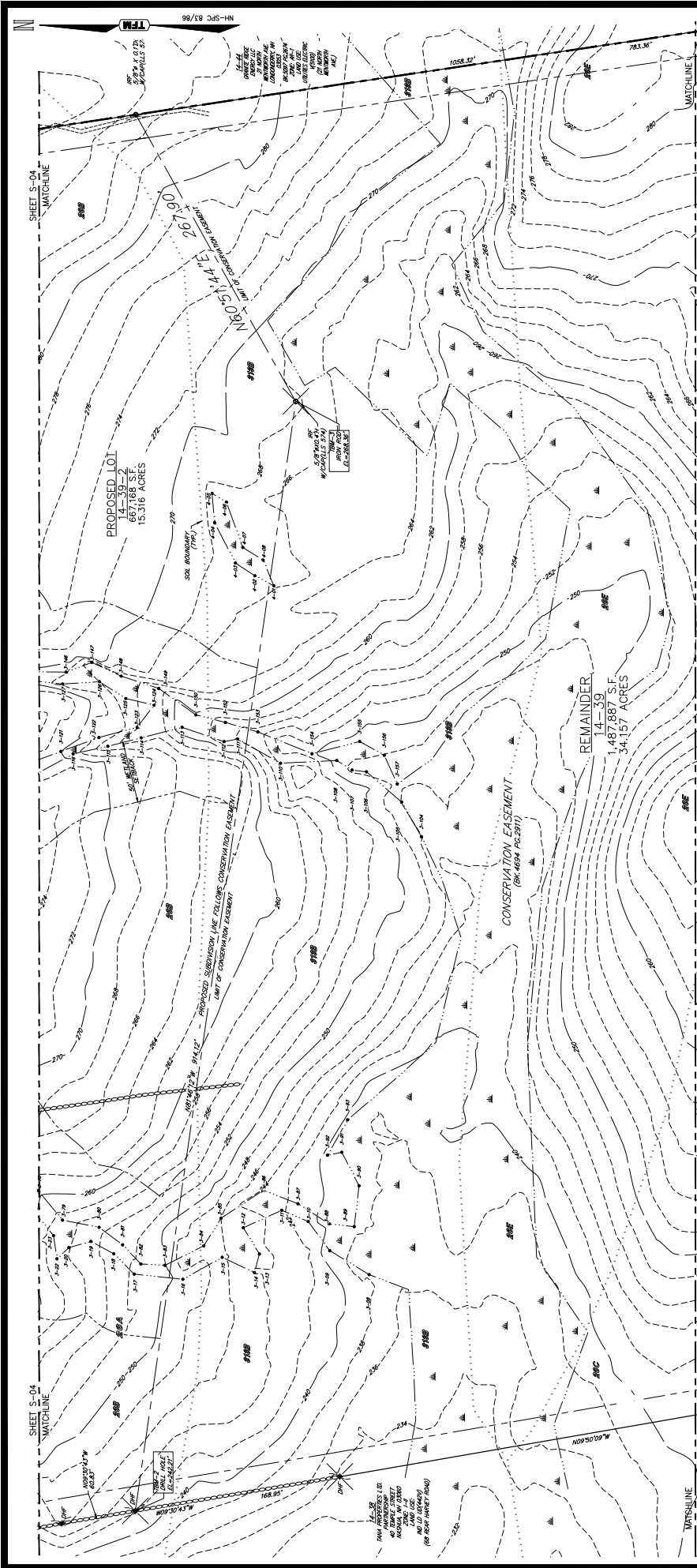
Copyright 2025 © TFM, Inc.

All rights reserved. These plans and materials may not be reproduced in any form without the written permission of TFM, Inc.

Dig Safe
811

CONTACT US: 603-472-4488
WWW.TFM.COM

REV.	DATE	REVISION/DESCRIPTION	DR	CK
1	12-18-25	REVISED PER TOWN REVIEW COMMENTS		



**TAX MAP 14 LOT 39-2 AND 39
SUBDIVISION PLAN
LAND OF CORNER
182 LITCHFIELD ROAD
LONDONDERRY, NEW HAMPSHIRE**

CRAIG FOWLER (LICENSEE)
NICHOLAS F. CODNER TRUST OF 2012
PREPARED FOR:
PURPOSE ENERGY-LONDONDERRY, LLC
PO BOX 4345, WINDHAM, NH 03087

SCALE: 1" = 40'
SEPTEMBER 6, 2025



Chil Engineers
Structural Engineers
Beaford, NH 03110
Phone (603) 472-4488
Land Surveyors
Landscapes Architects
Fox (603) 472-9747
www.ttfm.com

Chil Engineers
Structural Engineers
Beaford, NH 03110
Phone (603) 472-4488
Land Surveyors
Landscapes Architects
Fox (603) 472-9747
www.ttfm.com

Chil Engineers
Structural Engineers
Beaford, NH 03110
Phone (603) 472-4488
Land Surveyors
Landscapes Architects
Fox (603) 472-9747
www.ttfm.com



WETLAND SCIENTIST CERTIFICATION
ON AUGUST 15, 2024 BY CHRISTOPHER K. SANDFORD, CWS, 2017
THE WETLANDS WERE EVALUATED AND FOUND TO BE THE CORNER OF ENGINEERS
CORPS OF ENGINEERS WETLAND DELINEATION MANUAL, NORTHWESTERN WINDHAM
THE WETLANDS WERE IDENTIFIED USING FIELD INDICATORS OF HYBRIC SOILS OF
MRCS, VERSION 3.1, 2017. DOMINANCE OF HYDROPHILIC VEGETATION WAS
VERSION 3.1, 2017. WETLAND PLANTS: SCAE, LAW, WIL.
VERSION 3.1, 2017. WETLAND PLANTS: SCAE, LAW, WIL.

SURVEYOR'S CERTIFICATION
I, MICHAEL J. DALBEY, BEING A LICENSED LAND SURVEYOR IN THE STATE OF NEW HAMPSHIRE, DO HEREBY CERTIFY THAT THIS PLAN WAS PREPARED BY ME OR
BASED ON AN ACTIVE FIELD SURVEY MADE BY THIS OFFICE IN W.F. OF
ACCURACY SHALL BE PART IN THIS INDEMNITY (10:0202).
MICHAEL J. DALBEY
12-22-2025
DATE

OWNERS SIGNATURE: *SAND*
OWNER OF REPRESENTATIVE: SAND

MRCS SOILS LEGEND
REGULATORY CONSERVATION SERVICE, NATIONAL COMPREHENSIVE SOIL SURVEY BY SOOCONWAY
COUNTY, NEW HAMPSHIRE.
30A WINDSOR LOAMY SAND, 0 TO 3 PERCENT SLOPES
30B WINDSOR LOAMY SAND, 3 TO 8 PERCENT SLOPES
30C WINDSOR LOAMY SAND, 8 TO 15 PERCENT SLOPES
30D WINDSOR LOAMY SAND, 15 TO 60 PERCENT SLOPES
40B MONTAUK FINE SANDY LOAM, 0 TO 8 PERCENT SLOPES, VERY STONY
71B SABBARD MUCK, COARSE LOAM, 0 TO 3 PERCENT SLOPES
91B DEERFIELD LOAM FINE SAND, 3 TO 8 PERCENT SLOPES

WETLAND SCIENTIST CERTIFICATION
ON AUGUST 15, 2024 BY CHRISTOPHER K. SANDFORD, CWS, 2017
THE WETLANDS WERE EVALUATED AND FOUND TO BE THE CORNER OF ENGINEERS
CORPS OF ENGINEERS WETLAND DELINEATION MANUAL, NORTHWESTERN WINDHAM
THE WETLANDS WERE IDENTIFIED USING FIELD INDICATORS OF HYBRIC SOILS OF
MRCS, VERSION 3.1, 2017. DOMINANCE OF HYDROPHILIC VEGETATION WAS
VERSION 3.1, 2017. WETLAND PLANTS: SCAE, LAW, WIL.
VERSION 3.1, 2017. WETLAND PLANTS: SCAE, LAW, WIL.

SURVEYOR'S CERTIFICATION
I, MICHAEL J. DALBEY, BEING A LICENSED LAND SURVEYOR IN THE STATE OF NEW HAMPSHIRE, DO HEREBY CERTIFY THAT THIS PLAN WAS PREPARED BY ME OR
BASED ON AN ACTIVE FIELD SURVEY MADE BY THIS OFFICE IN W.F. OF
ACCURACY SHALL BE PART IN THIS INDEMNITY (10:0202).
MICHAEL J. DALBEY
12-22-2025
DATE

OWNERS SIGNATURE: *SAND*
OWNER OF REPRESENTATIVE: SAND

LEGEND
STONE BOUND (FOUND) SLOPED ASPHALT CURB
IRON PIN (FOUND)
DRIER HOLE (FOUND)
UTILITY POLE
GUY WIRE
BENCHMARK
WATER VALVE
CATCH BASIN
MATERIAL BOX
EDGE OF PAVEMENT
BUILDING SETBACK
ZONING DISTRICT BOUNDARY
PROPERTY BOUNDARY
EASEMENT LINE
WATER LINE
GAS LINE
DRAIN LINE
WETLAND BOUNDARY
WETLAND SETBACK
DIRECTION OF DRAINAGE FLOW

WETLAND NOTE
THE PORTION OF THE PROPOSED LOT LINE
WITHIN THE EXISTING CONSERVATION EASEMENT WERE Delineated
AND RECORDED AT THE SOOCONWAY COUNTY
REGISTRY OF DEEDS AS PLAN 2018-001 SHEET 2A.

Copyright © 2025 TTFM, Inc. 4315 Constitution Drive
All rights reserved. This plan and plat may not be copied,
applied, replicated or otherwise reproduced in any form, without
the prior written permission of TTFM, Inc.
This plan is not effective unless signed by a duly authorized officer of
TTFM, Inc.

REV.	DATE	REVISION, SEE DRAWING COMMENTS	BY	CHK
1	12-22-25			

WETLAND SCIENTIST CERTIFICATION
ON AUGUST 15, 2024 BY CHRISTOPHER K. SANDFORD, CWS, 2017
THE WETLANDS WERE EVALUATED AND FOUND TO BE THE CORNER OF ENGINEERS
CORPS OF ENGINEERS WETLAND DELINEATION MANUAL, NORTHWESTERN WINDHAM
THE WETLANDS WERE IDENTIFIED USING FIELD INDICATORS OF HYBRIC SOILS OF
MRCS, VERSION 3.1, 2017. DOMINANCE OF HYDROPHILIC VEGETATION WAS
VERSION 3.1, 2017. WETLAND PLANTS: SCAE, LAW, WIL.
VERSION 3.1, 2017. WETLAND PLANTS: SCAE, LAW, WIL.

SURVEYOR'S CERTIFICATION
I, MICHAEL J. DALBEY, BEING A LICENSED LAND SURVEYOR IN THE STATE OF NEW HAMPSHIRE, DO HEREBY CERTIFY THAT THIS PLAN WAS PREPARED BY ME OR
BASED ON AN ACTIVE FIELD SURVEY MADE BY THIS OFFICE IN W.F. OF
ACCURACY SHALL BE PART IN THIS INDEMNITY (10:0202).
MICHAEL J. DALBEY
12-22-2025
DATE

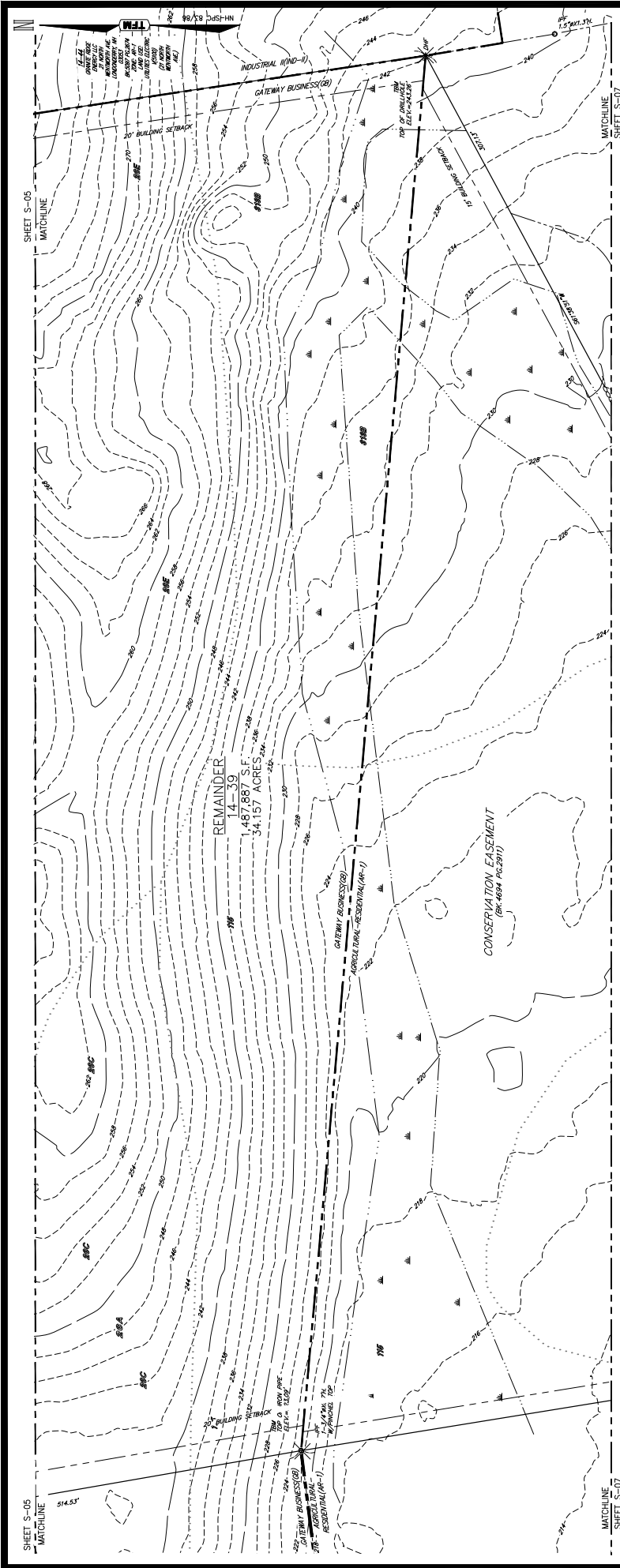
OWNERS SIGNATURE: *SAND*
OWNER OF REPRESENTATIVE: SAND

LEGEND
STONE BOUND (FOUND) SLOPED ASPHALT CURB
IRON PIN (FOUND)
DRIER HOLE (FOUND)
UTILITY POLE
GUY WIRE
BENCHMARK
WATER VALVE
CATCH BASIN
MATERIAL BOX
EDGE OF PAVEMENT
BUILDING SETBACK
ZONING DISTRICT BOUNDARY
PROPERTY BOUNDARY
EASEMENT LINE
WATER LINE
GAS LINE
DRAIN LINE
WETLAND BOUNDARY
WETLAND SETBACK
DIRECTION OF DRAINAGE FLOW

WETLAND NOTE
THE PORTION OF THE PROPOSED LOT LINE
WITHIN THE EXISTING CONSERVATION EASEMENT WERE Delineated
AND RECORDED AT THE SOOCONWAY COUNTY
REGISTRY OF DEEDS AS PLAN 2018-001 SHEET 2A.

Copyright © 2025 TTFM, Inc. 4315 Constitution Drive
All rights reserved. This plan and plat may not be copied,
applied, replicated or otherwise reproduced in any form, without
the prior written permission of TTFM, Inc.
This plan is not effective unless signed by a duly authorized officer of
TTFM, Inc.

REV.	DATE	REVISION, SEE DRAWING COMMENTS	BY	CHK
1	12-22-25			



LEGEND

- ROAD (ROUND)
- RAIL (ROUND)
- RAIL (SQUARE)
- UTILITY POLE
- GUY WIRE
- BENCHMARK
- WATER VALVE
- HYDRANT
- CATCH BASIN
- WETLAND FLAG LOCATION
- WETLAND SETBACK
- EDGE OF PAVEMENT
- DIRECTION OF DRAINAGE FLOW
- SLOPED ASPHALT CURB
- STONEWALL
- 2' CONTOUR
- 10' CONTOUR
- SOILS BOUNDARY
- SOILS MAP UNIT SYMBOL
- WETLAND FLAG LOCATION
- WETLAND SETBACK
- DIRECTION OF DRAINAGE FLOW
- BRICKING SETBACK
- BOUNDARY SETBACK
- PROPERTY BOUNDARY
- EASEMENT LINE
- WATER LINE
- GAS LINE
- DRAIN LINE
- SEWER LINE
- ABUTTING PROPERTY LINE

NRCS SOILS LEGEND

SOILS INFORMATION SHOWN HEREON IS CHRONICALLY REPRODUCED FROM THE USDA NATIONAL COUNTY SOIL SURVEY. GENERAL, NATIONAL, COOPERATING SOIL SURVEY OF NEW HAMPSHIRE.

- 200A WINDSOR LOAMY SAND, 0 TO 3 PERCENT SLOPES
- 200B WINDSOR LOAMY SAND, 3 TO 8 PERCENT SLOPES
- 200C WINDSOR LOAMY SAND, 8 TO 15 PERCENT SLOPES
- 200E WINDSOR LOAMY SAND, 15 TO 60 PERCENT SLOPES
- 400B MONKHAUF FINE SANDY LOAM, 0 TO 8 PERCENT SLOPES, VERY STONY
- 710 SCARBOROUGH COASTAL LOWLAND, 0 TO 3 PERCENT SLOPES
- 870B DEEPFIELD LOAMY FINE SAND, 3 TO 8 PERCENT SLOPES

WETLAND NOTE

THIS PLAN IS A PRELIMINARY DESIGN AND DOES NOT CONSTITUTE A GUARANTEE OF THE ACCURACY OF THE INFORMATION SHOWN HEREON. THE DESIGNER HAS CONDUCTED VISUAL INSPECTIONS OF THE SITE AND HAS FOUND NO EVIDENCE OF WETLANDS. THE DESIGNER HAS REVIEWED THE RECORD DRAWINGS AND HAS FOUND NO EVIDENCE OF WETLANDS. THE DESIGNER HAS REVIEWED THE RECORD DRAWINGS AND HAS FOUND NO EVIDENCE OF WETLANDS. THE DESIGNER HAS REVIEWED THE RECORD DRAWINGS AND HAS FOUND NO EVIDENCE OF WETLANDS.

WETLAND NOTE

THIS PLAN IS A PRELIMINARY DESIGN AND DOES NOT CONSTITUTE A GUARANTEE OF THE ACCURACY OF THE INFORMATION SHOWN HEREON. THE DESIGNER HAS CONDUCTED VISUAL INSPECTIONS OF THE SITE AND HAS FOUND NO EVIDENCE OF WETLANDS. THE DESIGNER HAS REVIEWED THE RECORD DRAWINGS AND HAS FOUND NO EVIDENCE OF WETLANDS. THE DESIGNER HAS REVIEWED THE RECORD DRAWINGS AND HAS FOUND NO EVIDENCE OF WETLANDS.

TAX MAP 14 LOT 39-2 AND 39
SUBDIVISION PLAN
LAND OF COOPER
162 LITCHFIELD ROAD
LONDONDERRY, NEW HAMPSHIRE

GRAIG FOWLER (REGISTERED)
 NICHOLAS F. COOPER TRUST OF 2012
 PREPARED FOR:
 PURPOSES ENERGY/LONDONDERRY, LLC
 PO BOX 4345, WINDHAM, NH 03087

SCALE: 1" = 40'

SEPTEMBER 6, 2025

ITFM

Civil Engineers
 Structural Engineers
 Land Surveyors
 Landscape Architects
 Scientists

148 Constitution Drive
 Bedford, NH 03110
 Phone (603) 472-4488
 Fax (603) 472-9747
 www.itfm.com

10252.01
 2223/2300
 10252-01 Survey
 SUB-6 OF 8

SURVEYOR'S CERTIFICATION

I HEREBY CERTIFY THAT THIS PLAN WAS PREPARED BY ME OR UNDER MY CLOSE PERSONAL SUPERVISION AND THAT I AM A LICENSED SURVEYOR IN THE STATE OF NEW HAMPSHIRE. THE INFORMATION SHOWN ON THIS PLAN IS THE RESULT OF A VISUAL SURVEY AND IS NOT BASED ON AN ACTUAL FIELD SURVEY MADE BY THIS OFFICE IN ACCORDANCE WITH THE REQUIREMENTS OF RSA 281:102. THE ACCURACY OF THIS PLAN IS LIMITED TO THE ACCURACY OF THE DATA PROVIDED TO ME BY THE CLIENT.

Michael P. Dooling
 LICENSED LAND SURVEYOR
 DATE: 12-22-2025

OWNER'S SIGNATURE

DATE: 12-22-2025

Copyright 2025 ©
 ITFM, Inc.
 148 Constitution Drive
 Bedford, NH 03110
 Phone (603) 472-4488
 Fax (603) 472-9747
 www.itfm.com

All rights reserved. These plans and materials may not be reproduced, stored in a retrieval system, or transmitted in any form or by any means, electronic, mechanical, photocopying, recording, or otherwise, without the prior written permission of ITFM, Inc.

This plan is the property of ITFM, Inc. and is to be used only for the project and site authorized by the client. ITFM, Inc. is not responsible for any errors or omissions on this plan.

REV.	DATE	DESCRIPTION	BY	CHK
1	12-22-25	REVISED PER DOWN REVIEW COMMENTS	JD	MD

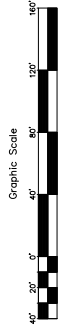
LEGEND

- STONE BOUND (FOUND)
- IRON PIN (FOUND)
- ◆ DRILL HOLE (FOUND)
- UTILITY POLE (FOUND)
- BUI WIRE
- BENCHMARK
- WATER VALVE
- HYDRANT
- CATCH BASIN
- MAIL BOX
- DIRECTION OF DRAINAGE FLOW
- EDGE OF PAVEMENT
- EDGE OF DRIVEWAY
- OVERHEAD WIRES
- STONE WALL
- 10' CONTOUR
- 20' CONTOUR
- SOILS BOUNDARY
- SOILS MAP UNIT SYMBOL
- WETLAND DELINEATION
- WETLAND FLAG LOCATION
- WETLAND SETBACK
- BUILDING SETBACK
- ZONING DISTRICT BOUNDARY
- PROPERTY BOUNDARY
- EASEMENT LINE
- WATER LINE
- GAS LINE
- SEWER LINE
- HUNTING PROPERTY LINE

NRCS SOILS LEGEND

SOILS INFORMATION SHOWN HEREON IS GRAPHICALLY REPRODUCED FROM THE USDA NATURAL RESOURCE CONSERVATION SERVICE, NATIONAL COOPERATIVE SOIL SURVEY OF ROCKINGHAM COUNTY, NEW HAMPSHIRE.

- 308A WINDSOR LOAMY SAND, 0 TO 3 PERCENT SLOPES
- 308B WINDSOR LOAMY SAND, 3 TO 15 PERCENT SLOPES
- 308C WINDSOR LOAMY SAND, 15 TO 60 PERCENT SLOPES
- 408B MONTAUK FINE SANDY LOAM, 0 TO 8 PERCENT SLOPES, VERY STONY
- 775 SABBODD MUCK COASTAL LOAM, 0 TO 3 PERCENT SLOPES
- 875B DEERFIELD LOAMY FINE SAND, 3 TO 8 PERCENT SLOPES



**TAX MAP 14 LOT 39-2 AND 39
SUBDIVISION PLAN**

**LAND OF CORNER
162 LITCHFIELD ROAD
LONDONDERRY, NEW HAMPSHIRE**

CREATED BY: CRAIG FOWLER (TS/EST)
NICHOLAS F. CODNER TRUST OF 2012
PREPARED FOR: PURPOSEENERGY-LONDONDERRY, LLC
PO BOX 4345, WINDHAM, NH 03087

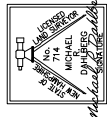
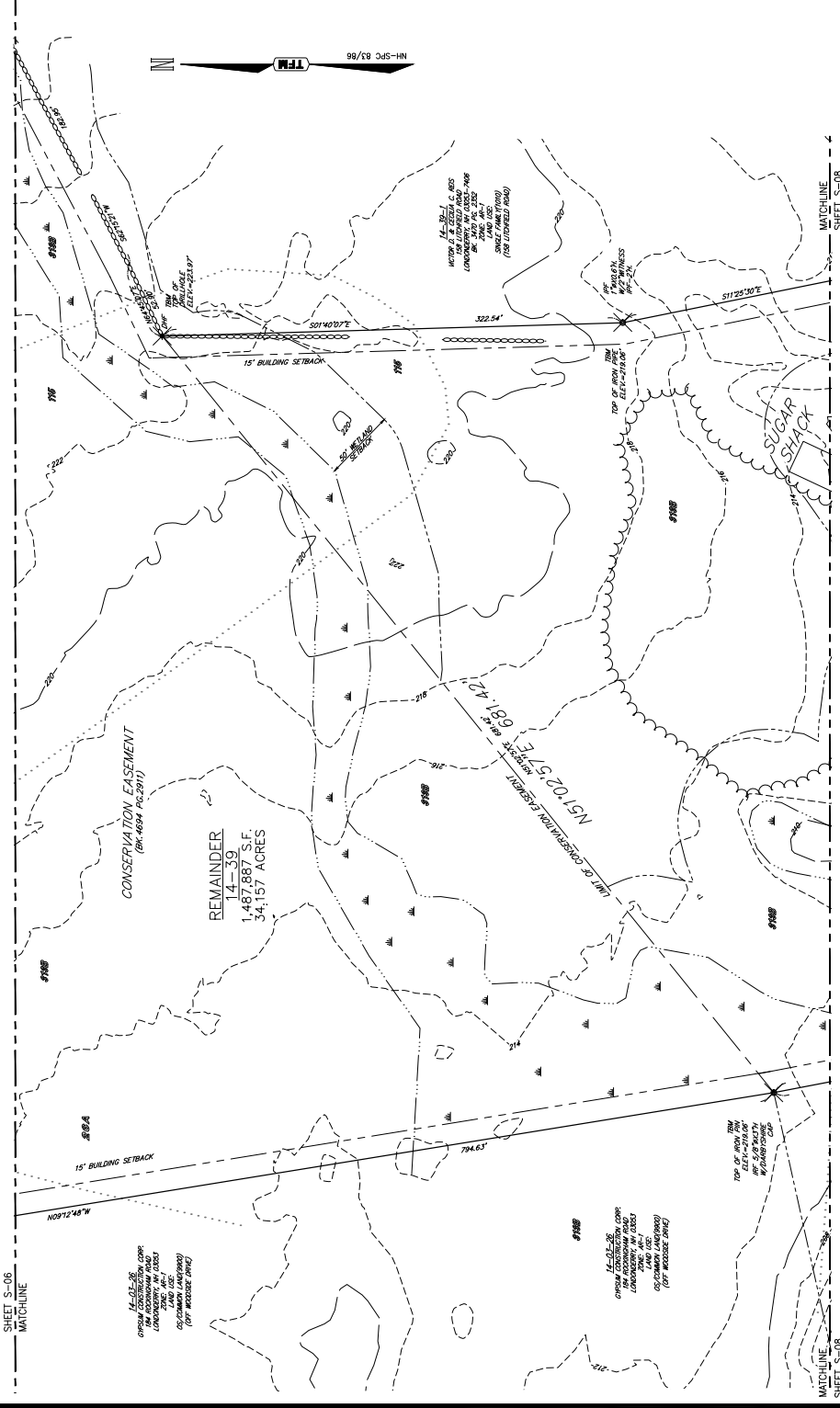
SCALE: 1" = 40' SEPTEMBER 6, 2025

TFM
Civil Engineers
Structural Engineers
Land Surveyors
Landscape Architects
www.tfm.com

148 Constitution Drive
Bedford, NH 03110
Phone (603) 472-4488
Fax (603) 472-9747

10252-01
1811 TFB # 2221/2300
CH/MD/coler | 18252-01 Survey | SUB-7 OF 8

SHEET S-06
MATCHLINE



SURVEYOR'S CERTIFICATION
I HEREBY CERTIFY THAT THIS PLAN WAS PREPARED BY ME OR UNDER MY DIRECT SUPERVISION. FURTHER, THE PLAN IS A TRUE AND CORRECT REPRESENTATION OF THE PART OF THE 2024 TAX MAP SHOWN AND AN ERROR OF CLOSURE OF NOT LESS ACCURACY THAN ONE PART IN TEN THOUSAND (1:10,000).

Michael P. Dalbey
LICENSED LAND SURVEYOR
DATE: 12-22-2024

OWNER'S SIGNATURE: *SOMO*
OWNER OR REPRESENTATIVE: _____
DATE: 12-22-2024

WETLAND NOTE
THIS PLAN IS A PART OF THE PROPOSED SET LINE WITHIN THE EXISTING CONSERVATION EASEMENT WISE DETERMINED BY THE NEW HAMPSHIRE DEPARTMENT OF REVENUE AND RECORDS AS PLAN #51516 SHEET 28.

Copyright 2025 © TFM, Inc.
All rights reserved. These plans and materials may not be reproduced in any form without the prior written permission of TFM, Inc.
This plan is not effective until signed by the authorized officer of TFM, Inc.

CONTACT DMS SAFE 72 BUSINESS HOURS: 775.735.7676

Dig Safe
CALL BEFORE YOU DIG

REV.	DATE	REVISED FOR/DESCRIPTION	DR	MD	CK

SHEET S-06
MATCHLINE

SHEET S-08
MATCHLINE

PLAN NO. D-26879
 PLAN NO. D-27991

